



Truth

about

EARTHQUAKES



*WHY more earthquakes
are coming—and WHERE!
WHAT CAUSES them!
WHAT is PROPHESED
about future earthquakes!*

by Albert J. Portune

SCIENTISTS are being *shaken* by new, sobering, almost unbelievable facts concerning earthquakes. Recent knowledge has come to light that revolutionizes all previous concepts. These awesome new concepts reveal a *threat* to human existence that rivals the hydrogen bomb.

Something BIG and ominous is building up deep within the earth. The sudden increase in earth tremors—both in frequency and magnitude—has become a point of growing concern.

What Science Has Discovered

Dr. Perry Byerly, former professor of seismology at the University of California, recently stated: "Something world-wide is going on, but it is hard to say just what it is... *we don't know what*. But great forces are at work in relative patterns, trying to pull our continents in one direction or another. This is due to something *below*, a great STRAIN that is accumulating..."

Graphic testimony of this growing concern is evidenced by what occurred in Chile, in South America.

Never Before

Striking suddenly out of the gray dawn of Saturday, May 21, 1960 erupted the *most devastating and catastrophic* series of earthquakes EVER RECORDED ON EARTH! Within hours an area as large as the *state* of New York—as large as all England!—was *completely destroyed*. FOUR THOUSAND persons lay dead! Another thousand lay dying, their plaintive cries for aid going unheeded in the twisting chaos about them. Thousands of other injured were trapped beneath the growing wreckage of collapsed buildings, bricks and mortar dust!

This was Concepcion, third largest city in Chile. Here, and in other major cities in the narrow 2,000-mile-long country, began a ten-day era of terror and a series of events that defy the imagination.

When the first huge temblor shook Concepcion, large industrial hub of the country,

30% of the city's buildings COLLAPSED. Hundreds of factory workers and residents poured into the streets! By evening 138 dead were counted and thousands were praying in the streets that the worst had passed.

By noon the following day, courage and hope returned and the majority of the populace began picking its way around in the rubble. At 3:05 p.m. the ground again HEAVED and nine minutes later—at 3:14 p.m.—the MIGHTIEST EARTHQUAKE *ever recorded on seismographic equipment* shook the Pacific strand of Chile like a rag doll.

High in the Andes the devastating tremors triggered mountain slides and avalanches, burying *entire villages*, highways and railroads. Rivers, dammed by rockslides, flooded other helpless hamlets.

In the Gulfs of Corcovado and Ancud, whole islands *disappeared* beneath the sea while other new sections of earth thrust up above the swirling waters—creating *new* islands.

New volcanoes were suddenly born—adding their spewing, red-hot lava and smoke to several old volcanoes suddenly come to life.

In *stark terror* thousands of eyewitnesses saw an entire 25-mile strip of coastline suddenly sink *ONE THOUSAND FEET*. The whole face of the land was changed!

People by the hundreds fell in terror, unable to move from sheer fear, and from the violence of the writhing earth. "It seemed like the end of the world..."

Geologic History

In the ten-day series of over *one hundred* earthquakes, twelve tremors exceeded the intensity of six on the Richter scale. Six is classified as a major earthquake. The cataclysmic shock of May 22 reached 9.2 on the scale—THE STRONGEST EARTHQUAKE EVER RECORDED ON MODERN SEISMOGRAPHS.

The tremendous violence of the upthrusting earth sent giant seismic waves hurtling across the Pacific Ocean as fast as 520 miles per hour. Tremendous havoc and destruction

came to coastal cities as far as TEN THOUSAND miles away. Damage running into the millions of dollars was recorded in Hawaii, Japan, Okinawa, Alaska, New Zealand, Australia and the Philippine Islands.

These recent catastrophic earthquakes and the resultant seismic ocean waves that occurred in Chile have made *geologic history*. Never before has modern man been witness to earthquakes of such catastrophic proportions. Seismologists and scientists have had to *revise* their concept of the destructive capacity of earthquakes.

What does it all mean? Are these earthquakes a symptom of things to come? We must know!

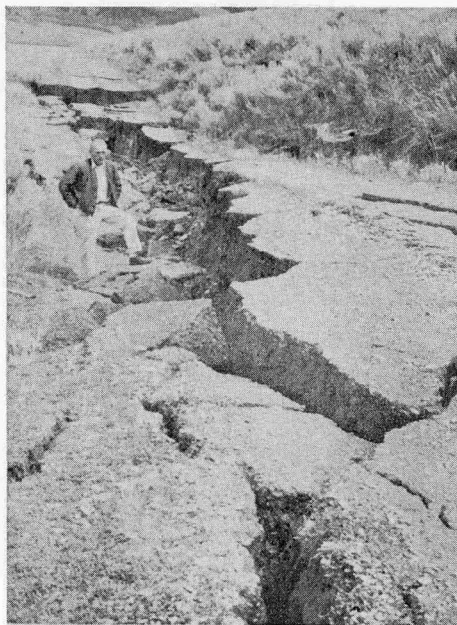
Summary of Recent Major Earthquakes — World-wide

The following summary of major earthquakes, with accompanying chart, dramatically demonstrates the reason for alarm among scientists and seismologists. Note the world-wide distribution of these major "quakes."

1. *Chile*, May, 1960—Area the size of New York state destroyed; \$600 million damage, over 5,000 dead, 450,000 homeless, another 150,000 homes badly damaged. One tremor, at 9.2 on Richter scale, was the *strongest ever recorded* on modern seismographs. Quake-spawned tidal waves battered coast of Hawaii, Japan, Alaska, Australia and New Zealand.
2. *Agadir, Morocco*, Feb. 29, 1960—12,000 dead; city wrecked by two earthquakes and a tidal wave.
3. *Iran*, April 24, 1960—1,500-3,000 dead as the city of Lar and neighboring village of Gerash were *completely destroyed*. Two huge tremors reduced Lar to a "billowing cloud of dust" as one observer commented. Another said, "This is the *worst scene of disaster and devastation I have ever seen.*"
4. *Algeria*, Feb. 21, 1960—46 dead.
5. *Peru*, Jan. 13, 1960—60 dead.
6. *Mexico*—An alarming increase in earthquakes noted in Mexico City area—over 40 during first half of August, 1959, alone. Residents of Loma Bonita fled into the streets and fell to their knees to pray.
7. *Formosa*, Aug. 16, 1959—Violent 40-minute earthquake left 14 dead, many buildings destroyed and damaged in Hemgchung area.
8. *Solomon Islands*, Aug. 19, 1959—Tremors shook island of Vella Lavella every eight minutes for *eight hours*, tumbling brick and concrete buildings, leaving natives in a state of constant panic.
9. *Greece*, Jan. 8, 1959—An earthquake of "*extreme violence*" was reported around Rhodes or other Greek islands.
10. *Mongolia*, Jan. 23, 1958—MOSCOW: "RECORD EARTHQUAKE TOPPLES MOUNTAINS IN REMOTE MONGOLIA."—"One of the worst earthquakes ever recorded has rumbled the earth's surface in a remote part of Mongolia, splitting open huge chasms and toppling mountain peaks in a primeval display of natural force. Existing rivers were jerked into new courses, and completely new rivers — one eight miles long — were created... 'Dense clouds of dust billowing above the mountains to a height of 4,500 feet

Earthquake at Yellowstone Park in 1959 opened this gaping crack in road.

United Press International



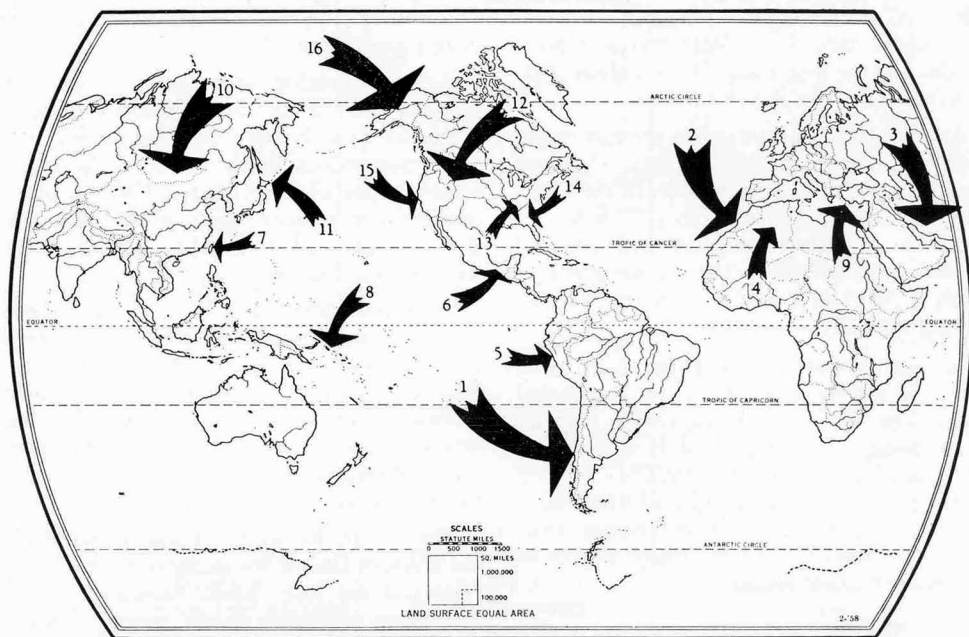


Chart showing world-wide occurrence of major earth tremors in a recent 2½ year period. The size of arrows denotes intensity of each quake. The numbers correspond with the summary in the text. (Courtesy the Ambassador College News Gathering Bureau.)

could be seen as far as 40 miles away. Some peaks cracked and half crumbled, and scars formed with a sheer drop of hundreds of yards. The center of the earthquake is marked by a fissure more than 155 miles long and up to 70 feet wide."

11. *Japan*, Nov. 7, 1958—Tremor equal to Tokyo quake of 1923.
12. *Montana, U.S.A.*, Aug. 17, 1959—Disaster struck near Yellowstone National Park—the largest quake in U.S. during present century excluding Nevada and California quakes.
13. *Tennessee, U.S.A.*, Dec., 1959—Sharpest quake in western Tennessee in 20 years.
14. *Georgia and South Carolina, U.S.A.*, Aug. 3, 1959—A rumbling, house-rolling tremor hit these southern states. "A tremendous jolt from some external force," said one observer.
15. *Northern California, U.S.A.*, March 3, 1959—Biggest in area since 1906 San Francisco quake.

16. *Alaska*—1959 quake regarded as one of greatest quakes in earth's history. WASHINGTON (NANA)—"Scientists of the Coast and Geodetic Survey have pieced together reports of one of the greatest earthquakes in world history. It occurred last year in a remote region of southeastern Alaska. Almost unnoted by the rest of the world, the effects were reported as far away as Hawaii and Valparaiso, Chile.

"Three-mile-high ice-capped mountains 'danced.' Waters of a small bay were thrown 1,800 feet up a mountainside in a titanic deluge which swept away great forests as if the trees were matchsticks. A great glacier was tossed over a high mountain range like a white flying carpet. Ships were thrown 15 feet or more out of the water. Over an area of 150 square miles, the soil boiled in sand craters, and there were great landslides. It might well have been one of the major catastrophes of history, except that it was in a very sparsely inhabited area."

No wonder scientists are concerned! Some-

thing *BIG* is brewing, but not even the scientists realize how big. These recent reports herald only the beginning. What's ahead concerns you and your family's future.

Almost daily the newswires are carrying a story of a seismic disturbance somewhere on earth. Elliott B. Roberts, member of the Coast Geodetic Survey, in California, U.S.A., reports that if every earthquake were counted—from the slightest to the major quakes—nearly a MILLION earthquakes are now occurring annually.

No matter how awesome the destructive power of the hydrogen bomb, it is dwarfed into insignificance compared to the destructive capacity of earthquakes. It would take the combined force of TWENTY-FIVE THOUSAND atomic bombs of the Hiroshima class to begin to release the equivalent energy of only ONE of the major shocks in the recent Chilean disaster.

No Area on Earth Immune

Although the majority of earthquakes take place along known seismic "belts," no area on earth is immune to catastrophic tremors. As a recent report has brought to light, "Great earthquakes occasionally occur OUTSIDE the main trouble zones. In the United States, for example, a *great* earthquake occurred in New Madrid in southeastern Missouri—an area not popularly considered earthquake-prone. This earthquake was felt over two-thirds of the United States." (*Dallas Times Herald*, August 23, 1959.)

Seismologist Leonard Murphy of the Coast and Geodetic Survey, recently stated, "We've been *lucky* in the United States in that few earthquakes have occurred in major, heavily populated cities." However, with recent knowledge of earthquake potential brought to light by investigations during the International Geophysical Year, no area on earth may be considered "outside" an earthquake zone. As one noted seismologist recently stated it: "The farther you are from the last major quake, the nearer you are to the next."

What Causes an Earthquake?

Ancient peoples once believed that the earth was supported upon the back of a huge legendary beast. Whenever the earth con-

vulsed they believed it to be the movements of this great beast.

As man's wisdom increased, he has come to learn more of the earth beneath his feet. Scientists now know that deep within the earth tremendous forces are at work. These forces are part of the primary LAW that keeps this earth in balance—part of the basic *law* that was planned and built into this earth when it was created.

Scientists realize there is much they do not yet know nor understand about these great forces constantly in motion beneath the surface of the earth. Yet, they are aware of their awesome potential when they examine the breath-taking flaws and distortions that have occurred on the surface as a result of these forces in action.

The mighty Rocky Mountains of the Middle Western United States, the towering Swiss Alps and the lofty South American Andes give mute testimony of the power of these mysterious subterranean forces.

These internal forces are part of the primary LAW that keeps this earth in balance. These expansional and contractional movements—that are constantly taking place within the earth—have their resultant effect upon the "skin" or crust of the earth. As a result, there must be a "giving and taking" to compensate for these tremendous subterranean forces.

The earth's crust therefore is a moving—almost living—thing, creased and cracked to allow for the constant moving and shifting that must occur.

Suppose the rectangle in FIGURE A — illustrated in the accompanying diagram — represents a large tract of land, perhaps several hundred miles across, and that the *weakest* rocks lie along the line AB. Imagine that the dotted lines are very long straight fences built across it. If the block is slowly strained by forces working on the land mass in different directions, it will be deformed so the fence is moved to the positions shown in B.

All the time this is going on—and the process is very slow—*elastic energy* is being stored up, just as when a spring is wound.

Eventually the strain may become so great that the weaker rocks can no longer *resist*.

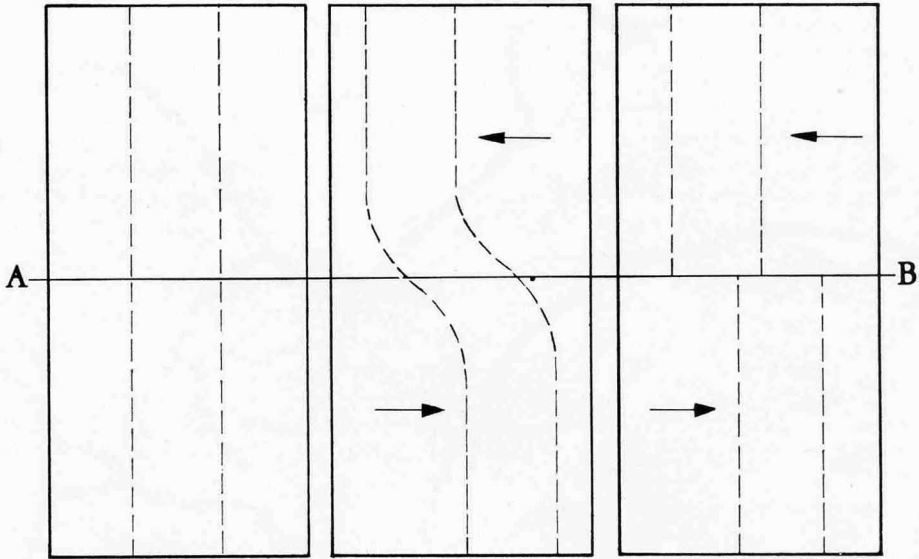


FIGURE A
Fences in straight
line across fault

FIGURE B
Elastic energy being
built up by pressure
below

FIGURE C
New unstrained
position after 'slip'
or earthquake along
fault

Suddenly they break and the stored-up elastic energy is released as the earth's crust shifts to a new position, just as if the coiled spring were suddenly let go.

The rocks along the line of weakness (AB) move until they take up a new UNSTRAINED position (C). The waves of energy set up by this sudden movement—or release—of tremendous areas of land we call an *earthquake*. This movement and stress pattern may occur horizontally, vertically or a combination of the two, according to the direction of the strain upon the land masses.

Earthquake Faults

In recent years seismologists and scientists have come to astounding new knowledge concerning the *origin* of earthquakes and earthquake potential on this earth. In their studies they have encountered new potentials that *stagger the imagination*.

Just over fifty years ago, at the time of the San Francisco earthquake of 1906, scientists were aware that certain "earthquake cracks" were associated with movements of the earth's crust. At this time—less than sixty years ago—scientists believed that these cracks in the

earth were the *by-product* of earth tremors—but had nothing to do with their *cause*.

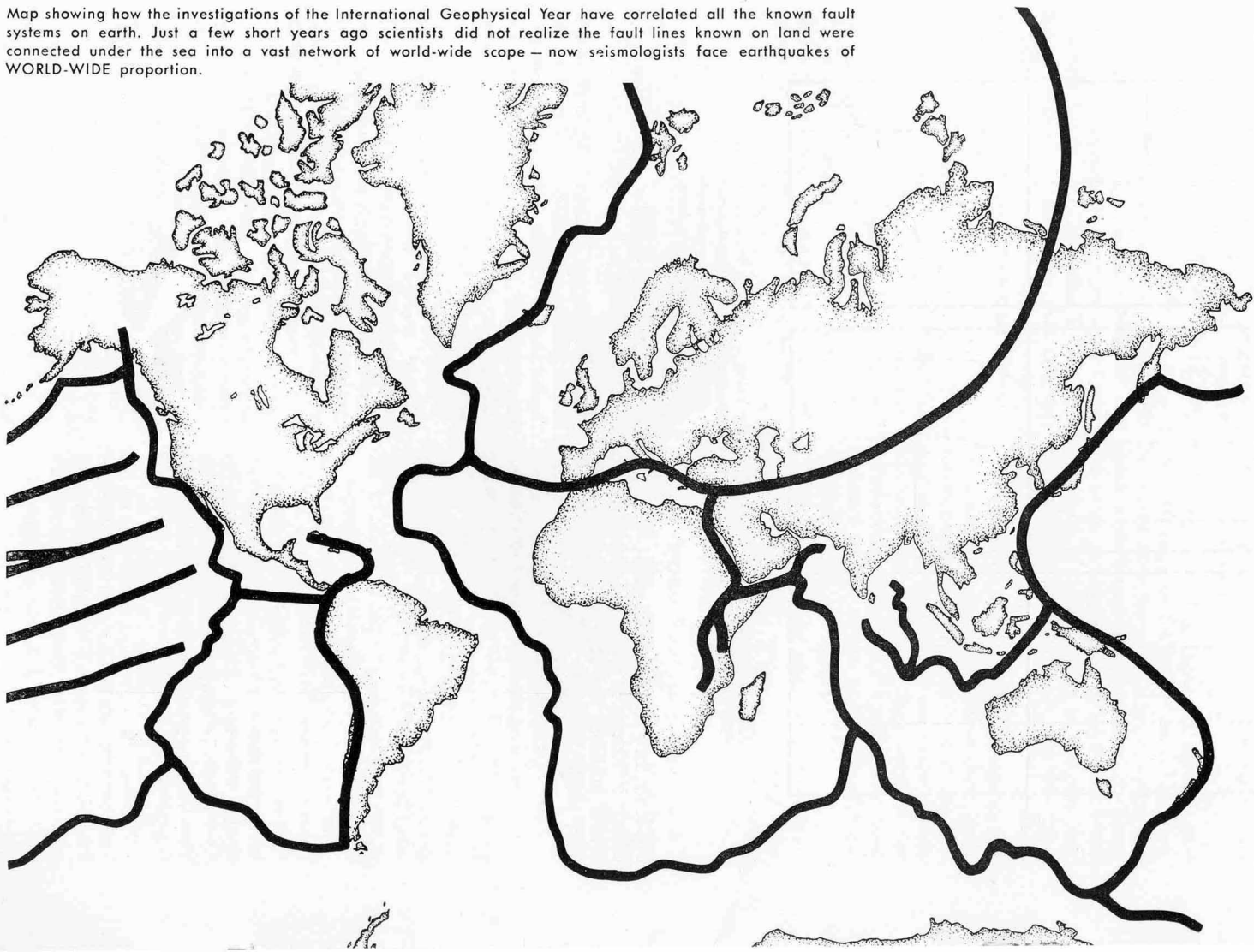
San Franciscans, back in 1906, knew of the "earthquake crack" and referred to it as the "great fissure." Other earthquake cracks had been observed in different places along the Pacific Coast, but had never been associated in any way *with* each other.

Soon after 1906 and the San Francisco disaster, serious investigations began into these isolated earthquake cracks. It was at this time that the startling truth was learned that these "isolated" faults were all part of one *tremendous gargantuan fault system*. It was to this particular vast fault—running visibly on the surface of the land for over 700 miles and stretching from the Gulf of California to a point well above San Francisco—that scientists gave the name "San Andreas Faultline."

Intensive studies of similar fault systems have revealed to scientists and seismologists that the *entire surface* of our earth is cracked and creased by these tremendous cracks and deformities.

Startling new facts have come to light as a result of exhaustive and intensive scientific

Map showing how the investigations of the International Geophysical Year have correlated all the known fault systems on earth. Just a few short years ago scientists did not realize the fault lines known on land were connected under the sea into a vast network of world-wide scope — now seismologists face earthquakes of WORLD-WIDE proportion.





Wide World Photo

Wrecked by earth tremors! Park section of downtown Puerto Montt after an earthquake ripped through Chile in 1960. Leaning in foreground, is a lamppost. The picture was taken by an American Mercy airlift team which brought 900 tons of food, clothing and medical supplies to the disaster areas.

research made during the International Geophysical Year of 1957. Charting and scrutinizing the hidden depths of previously unknown ocean floors, scientists have discovered additional breath-taking flaws in the earth's crust. Beneath the waters of the Mid-Atlantic lies the newly discovered *Mid-Atlantic Ridge*, a spectacular rift tracing its serpentine course from Antarctica in the south, through the Atlantic, all the way to the North Pole. This breath-taking ridge continues, in fact, beyond the North Pole on into the Pacific and AROUND THE WORLD.

Probing the mysteries of this phenomenon, scientists have discovered a huge *crack* or fault running along the crest of this ridge—in places MILES wide.

In similar studies in the Pacific, giant frac-

tures trace their way—unseen—beneath the sea, mute evidence of the tremendous forces lying below.

Terrible Potential

In studying these fault systems, scientists have had to come to an entirely new concept in earthquake potential. With the startling new knowledge of the immensity and magnitude of the tremendous fault systems that trace themselves through this earth, seismologists and geologists must face the reality that *Huge* faultlines mean **HUGE EARTHQUAKES**.

Never before have scientists been able to understand the world around us as they do today. The International Geophysical Year of 1957 has revealed more knowledge about this



Wide World Photo

A donkey waits to be loaded with household effects in the Moslem Casbah of Agadir, Morocco, in wake of earthquakes and tidal wave which practically razed the resort city in February, 1960.

globe we live on than mankind has been able to learn in all the centuries that have gone before.

Just as scientists less than 60 years ago did not associate the isolated fissures near San Francisco, California with one tremendous fault system over 700 miles long, scientists of just a decade ago did not realize how intricately this earth is cracked into a maze or network of *related* fault systems. In the last few years — especially with the recent investigations of the I.G.Y. — the staggering truth has been realized. No earthquake on earth can be considered an isolated occurrence, but rather the stretching of one muscle in the breathtaking gargantuan fault system that one day may break loose into the most fantastic geology display ever witnessed by man.

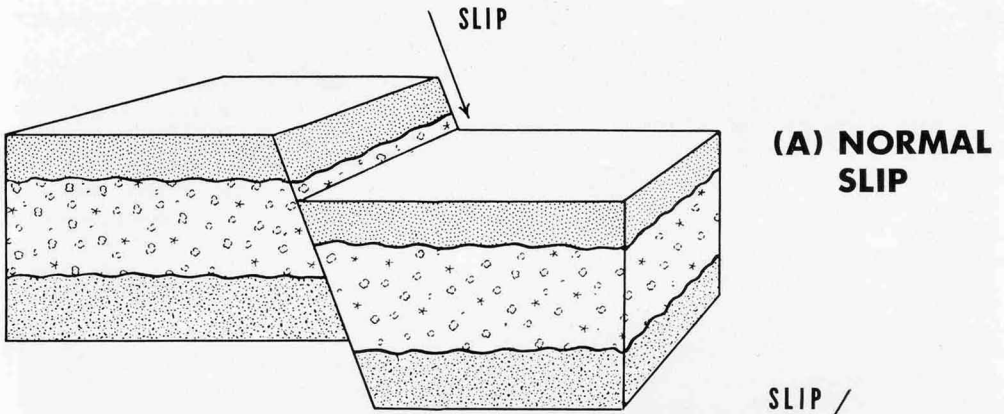
Yes, the shocking reality scientists must now face is the potential of WORLD-WIDE EARTHQUAKES.

Lee F. Noble, an alumnus of Yale Univer-

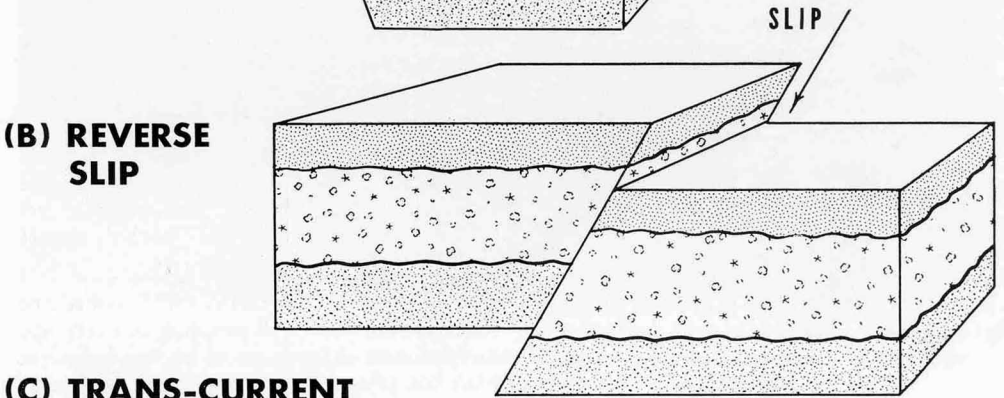
sity, has demonstrated this hugeness in earthquake potential that staggers the imagination. While studying strata distortion along the San Andreas faultline in California, Noble was amazed to discover a *FORTY MILE* separation between two imposing mountain ranges. He has demonstrated that the 10,000 foot San Gabriel range and the equally imposing San Bernardino range were once *ONE RANGE*, created by a tremendous upthrust along the San Andreas faultline in the past. Having created this range, the San Andreas faultline has subsequently torn it apart, dragging the two halves where they now stand today — better than forty miles apart.

Where slippages along faultlines were once thought of in terms of feet, they now must be understood in terms of *miles*.

The intensity of an earthquake is generally determined by the extent of displacement or slippage along a faultline. The amount of slip that produced the devastating San Francisco

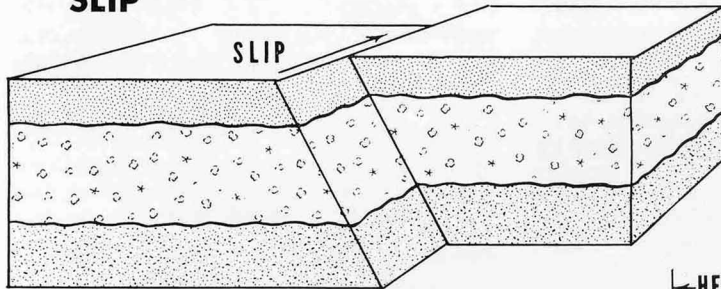


(A) NORMAL SLIP

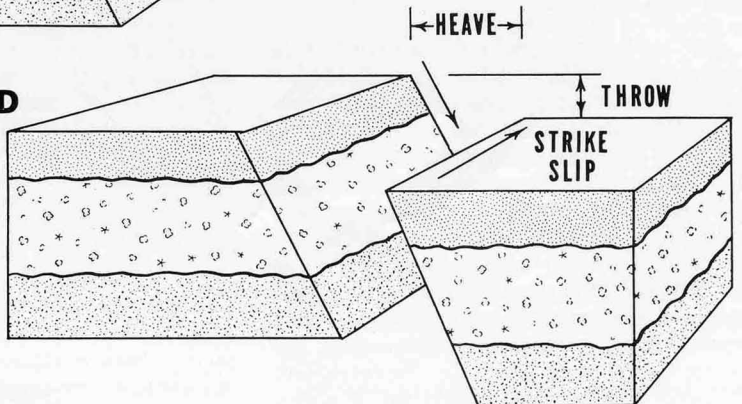


(B) REVERSE SLIP

(C) TRANS-CURRENT SLIP



(D) COMPOUND SLIP



earthquake in 1906 was apparently only *twenty-one feet*. Can it begin to enter our imagination the ferocity and scope of an earthquake where a slippage along a faultline of perhaps *ONE MILE* or more should take place? No structure in the area could be left standing — the whole face of the land would be changed! No wonder scientists have said the San Andreas faultline has the destructive potential of *ONE MILLION* atomic bombs.

This process of fracture and displacement is known to the geologist as "faulting." Faults are the result of subterranean compressional, tensional or shearing forces. The displacement of the strata may be different depending upon the type of force being exerted below. Almost every conceivable earth movement is possible, as is demonstrated in the accompanying simple diagrams of earth slips.

The earthquakes that recently devastated the Chilean coastline are graphic evidence of the destructive potential that we live with daily on this earth. Earthquakes of this magnitude *CAN OCCUR!* Scientists now realize the awesome fragility of the paper-thin shell we call the earth's crust, upon which we live.

Not So Solid Earth

Perhaps a clearer concept of the fragility of the earth's crust will serve to demonstrate the precarious position we live in daily.

We have come to look upon our earth as quite solid and substantial. However, when we scrutinize its construction more closely we are in for a *SHOCK*.

In the accompanying diagram the basic structure of the earth is shown — based on most recent data.

The inner core is probably composed of an ultra dense metallic material — superheated — under tremendous pressure. The outer core is similar in composition, probably of metallic iron. It is in a molten, superheated condition since it does not transmit certain seismic vibrations. The mantle of the earth is composed of very dense rock, more dense than any we know on the surface. The temperature of the mantle below the earth's crust is several thousand degrees centigrade, yet this ultra dense or basic rock remains a semi-solid due to the tremendous pressure. Nevertheless whenever that pressure is released, it spews

forth in white-hot superheated emissions known as volcanic eruptions.

Think of the tremendous pressure and potential force contained within the paper-thin shell of the earth's crust. The earth is *FOUR THOUSAND MILES THICK* down to the center of the core, yet the crust that encloses it all is only from 6 to 40 miles thick. Comparing our earth to an apple, the apple's skin is several times thicker in comparison to the thickness of the earth's crust in relation to the earth.

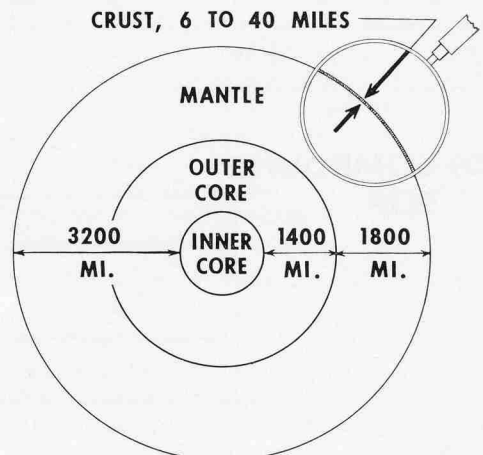
Perhaps now we can understand why the crust of the earth is not so solid after all, but entirely subject to the staggering power lying only skin deep below our feet.

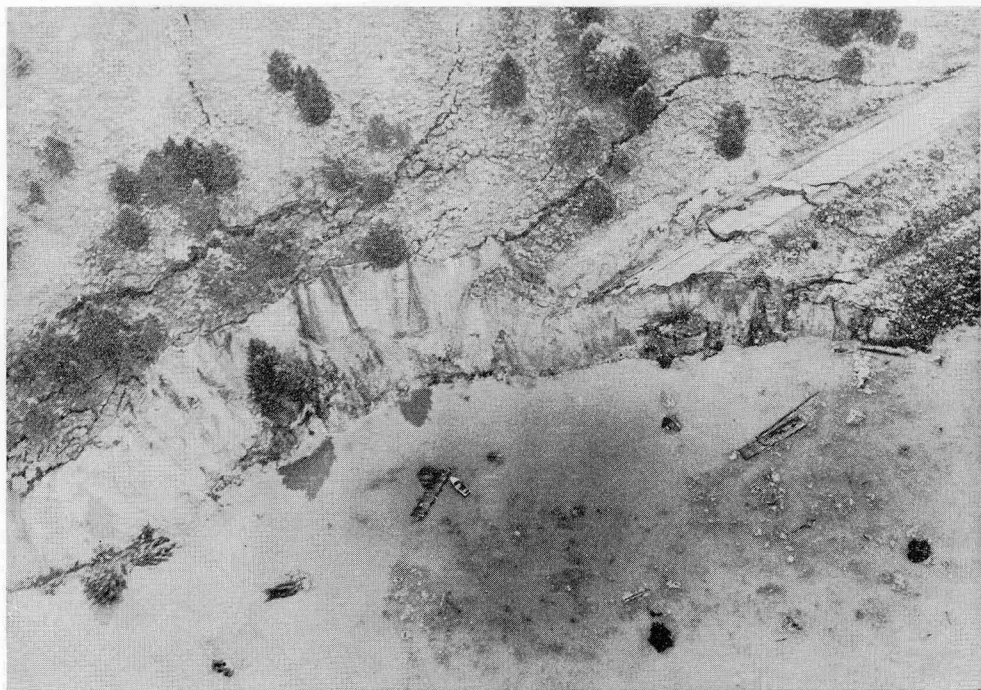
What About the Future?

Should we be alarmed about the future? Are earthquakes *going* to continue to increase in frequency and intensity? Our scientists tell us something is brewing. We need to know!

Down through the centuries God has warned man of his sinful and disobedient ways. God has sent His prophets in every age to warn man of the fruits of his disobedience. Man has rejected these warnings! And now, at the end of nearly 6,000 years, Almighty God is sending one last *final* warning to the world as a witness before He executes His *judgment* upon a godless and lawless world.

That last warning — of the coming rule of God over man — is now booming around the





United Press International

Highway disappears into Hebgen Lake following powerful series of earthquakes that trapped 150 and killed 16.

world just as Jesus Christ prophesied: "And this Gospel of the Kingdom shall be preached in all the world for a *witness* and then shall the END come" (Mat. 24: 14). That warning is being fulfilled through The WORLD TOMORROW program circling the globe with over TWELVE MILLION watts of power each week and through the pages of The PLAIN TRUTH magazine.

When Almighty God is *through* warning mankind verbally, He is going to speak in a language that man will heed and understand. God is going to bring down vengeance upon disobedient and lawless man.

Notice the judgment that the Creator God passes upon disobedient and rebellious peoples. "Enter into the rock, and hide thee in the dust for *FEAR* of the Eternal, and for the glory of his majesty. The lofty looks of man shall be humbled, and the haughtiness of man shall be bowed down, and the Lord alone shall be exalted in that day. For the *day of the Lord* of hosts shall be upon everyone that is proud and lofty, and upon everyone that is lifted up;

and he shall be *brought low*" (Isa. 2:10-12).

How is God going to accomplish this?

What are the means He is going to use?

God is going to bring upon man the most terrifying and nerve-shattering circumstances to bring man to his knees. God is going to *SHAKE* man into a realization of his sins and transgressions!

There can be no more *terrifying* experience than a "killer-quake" striking suddenly — without warning — in the still of the night. Imagine awakening suddenly amid a bedlam of crashing glass and falling debris. The floor of *YOUR* home or apartment pitching and bucking like a ship in a wild storm. Wall and ceilings collapse, fractured water mains erupt in watery geysers in the streets, spewing gas from ruptured gas lines — ignited by a million pilot lights — spew fire into the tinderred wreckage. Powerlines crash in a shower of lethal sparks upon crumbling homes and helpless panic-stricken people.

Imagine groping in the chaotic darkness

and tangled wreckage for *YOUR* loved ones and family. When our seemingly solid world collapses around us the possessions and baubles for entertainment we have gathered around us, that have kept us too occupied to seek our God and serve Him, will seem unimportant and worthless.

Notice now verse 17: "And the loftiness of man shall be brought down, and the haughtiness of men shall be made low: and the Eternal alone shall be exalted *in that day*. And the idols He shall utterly abolish. And they shall go into the holes of the rock, and into the caves of the earth, *for fear of the Eternal*, and for the glory of his majesty when he arises to *SHAKE TERRIBLY THE EARTH*. In that day man shall cast his idols of silver, and his idols of gold, which they made each one for himself to worship, to the *moles* and to the *bats*; to go into the clefts of the rocks, and into the tops of the ragged rocks, for the *fear of the Lord*, and for the glory of his majesty, when he arises to *SHAKE TERRIBLY THE EARTH*" (Isa. 2:17-21).

Mankind is not heeding God's warning booming around the world. So, God is going to employ the most awe-inspiring, horrifying circumstances to JAR mankind into reality. God is going to bring imagination-defying earthquakes — around the world — to make mankind turn from his rebellious ways.

Yes, man is going to forsake his cities that have been utterly destroyed — made rubble by the terrible hand of the Creator God in that day. Man will run into the open fields and out into the mountains seeking to escape the terrible shaking wrath of the Creator God, brought down upon mankind through terrible, devastating EARTHQUAKES.

Earthquakes a Sign

When Jesus Christ was asked, "Tell us, when shall these things be? and what shall be the *sign* of thy coming and the end of the age?" — Jesus Christ said that among many other terrible and destructive circumstances EARTHQUAKES would occur in many places (Mat. 24:7).

Jesus Christ promised that together with famines and pestilences, *earthquakes* will be one of the *signs* immediately preceding His imminent return. Christ told His disciples,

"Now learn a parable of the fig tree; when his branch is yet tender, and puts forth his leaves, *ye know* that summer is nigh: so likewise, when you shall see all these things, know that it is *near*, even at the doors" (Mat. 24:32,33).

Our major news sources and current scientific journals tell us that earthquakes are increasing in frequency and in magnitude. Earthquakes of a magnitude *never before recorded on earth* by man are *now occurring* — witness the devastation in 1960. These ARE *signs of the times*.

As we approach the end of this age, *earthquakes* are going to grow increasingly greater and more frequent in occurrence! Great earthquakes in heavily populated areas will begin to occur. Man is going to be shaken and terrified *until he is snapped into reality* — into realizing he has transgressed against the Creator God!

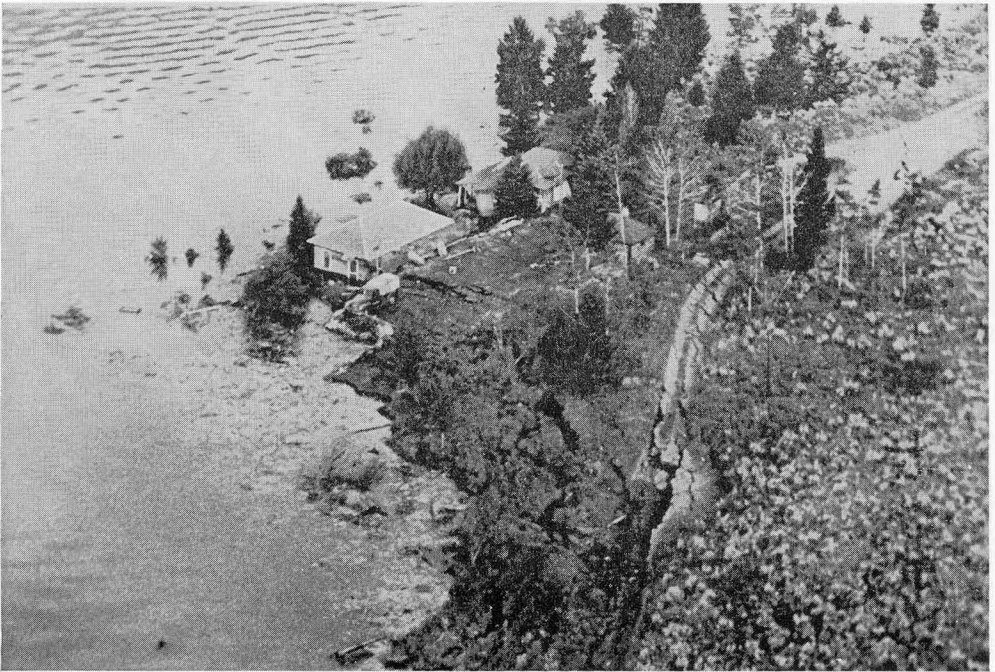
The Return of Jesus Christ

All these events will culminate in the *return of Jesus Christ to this earth!* Let's understand what is to occur.

Notice Zechariah 14. "Behold the *day of the Lord* cometh, and thy spoil shall be divided in the midst of thee" (verse 1). Now continuing in verse 4. "And his feet shall stand *in that day* upon the Mount of Olives which is before Jerusalem on the east, and the Mount of Olives shall *CLEAVE* in the midst thereof toward the east and toward the west and there shall be a great valley; and half of the mountain shall remove toward the north, and half of it toward the south. And you shall flee to the valley of the mountains; . . . yea, you shall flee like as you fled before the EARTHQUAKE in the days of Uzziah king of Judah."

Jesus Christ is returning to this earth to plant His feet upon the Mount of Olives. In that day there will be a *TREMENDOUS* earthquake in which the whole face of the land will be changed. Mountains will be moved out of their places! New valleys and rivers will be created. Jesus Christ will be King over all of the earth in that day (verse 9).

That same day is mentioned in Revelation 16. The time setting is the return of Jesus Christ to this earth. "And the seventh angel poured out his vial into the air; and there came a great voice out of the temple of



United Press International

Huge cracks in foreground show shore disappearing into Hebgen Lake in 1959 earthquake.

heaven, from the throne, saying, *It is done.* And there were voices, and thunderings, and lightnings; AND THERE WAS A GREAT EARTHQUAKE, *such as was not since men were upon the earth so mighty an earthquake and so great*" (vs. 17-18). "and the cities of the nations fell." (v.19)

The whole face of the earth is to be changed by this cataclysmic earthquake. "And every island fled away, and the mountains were not found" (vs. 20).

The return of Jesus Christ is going to be highlighted by the most cataclysmic earthquake that has ever struck this earth. It will defy the imagination! Every fault system and earthquake crack on the face of the earth will come into full play when Jesus Christ descends to *shake terribly* the earth.

Tremendous Tidal Waves

Not only will the earth itself writhe under the cataclysmic convulsions of this tremendous earthquake, but also the very oceans and seas will erupt in tremendous seismic waves to devastate huge portions of this earth.

Notice Jesus Christ's words in Luke 21. "For these be the days of *vengeance*, that all things which are written may be fulfilled. But woe unto them that are with child, and to them that give suck, in *those days!* For there shall be GREAT DISTRESS in the land and wrath upon *this people.* And there shall be signs in the sun, and in the moon, and in the stars; and *upon the earth* distress of nations, with perplexity: THE SEAS AND THE WAVES ROARING; men's hearts failing them for *fear* and for looking after those things which are *coming* on the earth: for the powers of the heavens shall be shaken" (Luke 21:22, 23, 25, 26).

Yes, these are the terrible and awe-inspiring times spoken of by Jesus Christ to soon come upon this earth.

Earthquakes to Grow Worse

Jesus Christ warned us that we would *know* of His impending return by the things He outlined to come to pass. With each passing day our major newspapers and news magazines world-wide tell us of increasing famine, pestilence among cattle and crops, of increas-

ing rumors of war and of the accelerated occurrence of *earthquakes* world-wide. These are *signs of the times!*

As we hurtle down toward the grand smash climax of this age, these means that God has chosen to shake man from his lethargy are going to *increase* in violence and scope.

Around the world whole nations have experienced earthquakes of a magnitude unprecedented in the history of man on this earth. Yet, these are to *grow worse*.

Scientists Aware of What's Ahead

Investigation into the earthquake faultlines of this earth has introduced into geologists' thinking an entirely new scope of destructive potential.

Unless we have God's protection — unless we know in advance about these things and are preparing for them — we will have to *go through them*.

But, notice Jesus' warning to *His* people. "Watch *ye* therefore and pray always that *ye* may be accounted worthy to escape ALL THESE THINGS that shall come to pass, and to stand before the Son of man" (Luke 21:36).

God Our Protector

God promises deliverance and protection to His people. God will not bring these things

upon those who *obey Him* and trust in Him. Notice His promise in Psalm 91.

"He that dwelleth in the secret place of the most High [he that is obeying and keeping the Commandments of Almighty God] shall abide under the shadow of the Almighty. Surely he shall deliver thee from the snare of the fowler, and from the *noisome* pestilence. Thou shall not be afraid for the *terror by night*; nor for the arrow that flieth by day; nor for the pestilence that walketh in darkness; nor for the *destruction* that *wasteth* at noonday. A thousand shall fall at thy side, and ten thousand at thy right hand; *but it shall not come nigh thee*. Because thou hast made the *Eternal*, which is for a refuge, even the most High, thy habitation; there shall no evil befall thee, neither shall any plague come *nigh thy dwelling*. For he shall give his angels *charge over thee, to keep thee in all thy ways.*"

Sometime in the future, perhaps tomorrow, perhaps next week or next year, when a sudden eerie silence falls over YOUR town — YOUR city — and then from deep within the bowels of the earth comes an ominous rumbling and your familiar world begins to sway and teeter and *dissolve* in CHAOTIC DESTRUCTION, *will you have God's protection?* Our only hope lies in obedience to the Creator God and to His Son Jesus Christ, our Lord and Savior. What a dreadful fate it will be to be His enemy when He *shakes terribly* the earth!

READ:

The PLAIN TRUTH, a magazine of understanding, explaining the true significance of world events, making BIBLE PROPHECY clear, plain, understandable, *interesting!* It's FREE! No subscription price. But you must request it for yourself. Mailing Address:

IN THE UNITED STATES
HERBERT W. ARMSTRONG
Box 111, Pasadena, California

IN AUSTRALIA
P. O. Box 345, North Sydney

IN BRITAIN AND EUROPE
B. C. M. AMBASSADOR
London, W. C. 1

IN CANADA
P. O. Box 44, Vancouver, B. C.

TUNE IN:

Herbert W. Armstrong analyzes today's news, with the prophecies of
The WORLD TOMORROW!

Broadcast World Wide — on Every Continent!

HEARD DAILY COAST TO COAST IN U. S. A. AND AUSTRALIA

See Log in The PLAIN TRUTH